

WRAP International AB Business proposition

Offer the best products and services on the market for radio network planning and optimization



MAKING RADIO VISIBLE, CONTROLLABLE AND VALUABLE

WRAP International AB

Investment/funding needed:

The project aims at providing software that plans LTE Broadband Wireless Data Rates.

Partner for R&D needed - Technology Offer: **WRAP Software System**

WRAP Software System plans coverage, frequency usage and calculates interference for all wireless technologies over the entire spectrum. We are now looking for partners to further develop and customize the system for new applications and markets.



We have the expertise for product development, services and training since 1990 in the area of Radio Network Planning.



MAKING RADIO VISIBLE, CONTROLLABLE AND VALUABLE

WRAP International

WRAP Software

- Planning
- Coverage
- Interference

Mobile Internet

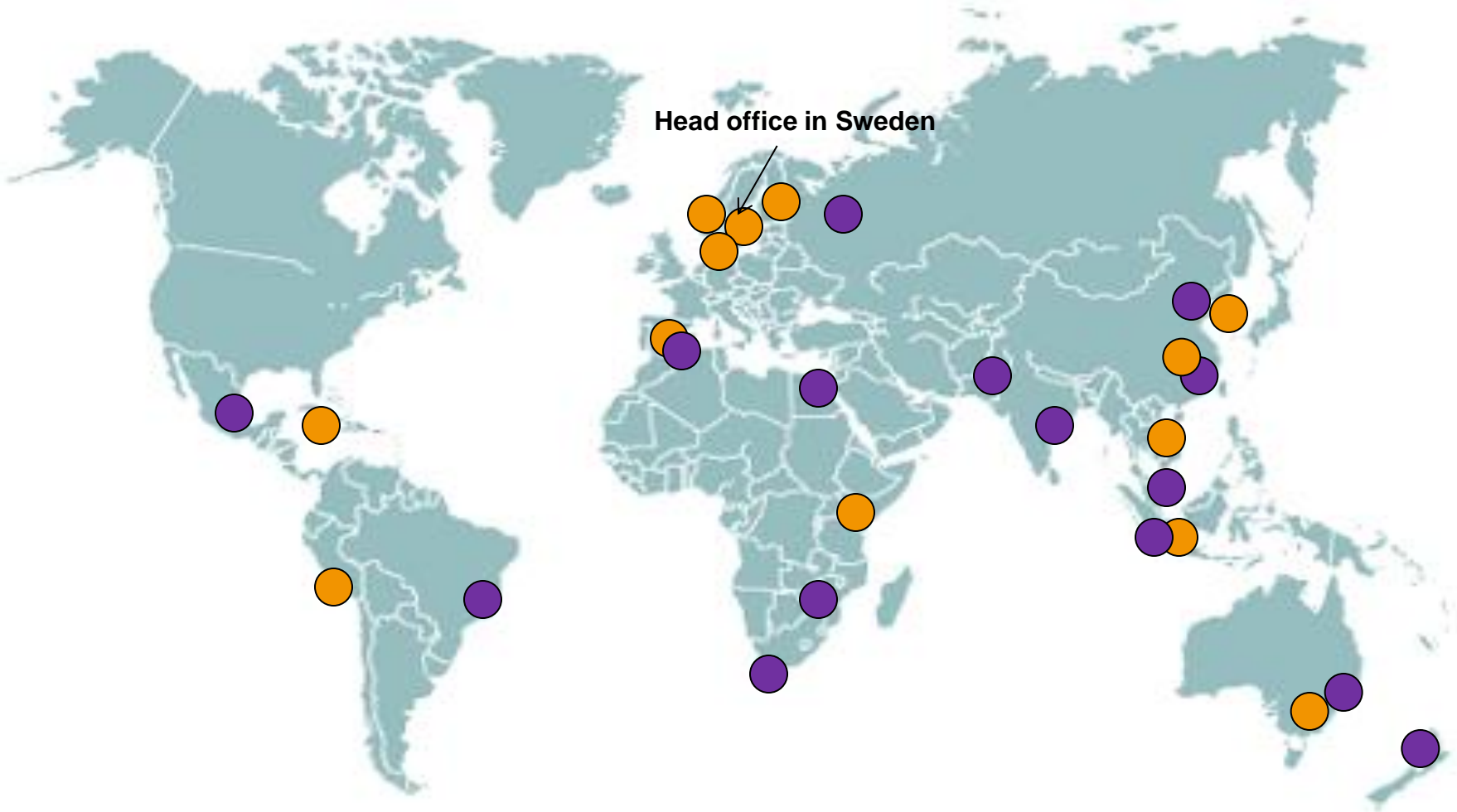
- Data Rates 4G LTE
- Data and Voice
- Optimization

Public and Defence

- Spectrum management
- Radar and Avionics
- Doppler and Weather

WRAP Customers ●

WRAP Agents ●



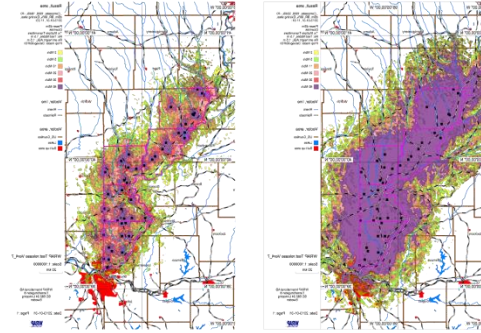
MAKING RADIO VISIBLE, CONTROLLABLE AND VALUABLE

Customer Segments

Mobile
Network
Operators

Public
Authorities

Armed
Forces



WRAP Software Products

The WRAP software family is module based.

Microsoft Visual Studio 2010, 2012. C++, C#, VB.NET. Databases: Microsoft SQL Server, Oracle, MySQL. Access application development with Microsoft Access. Microsoft Windows XP, Vista, 7, 8. Multithreaded, Open GL, Boost C++ library, Xerces XML library.

- Coverage
- Radio Link Performance
- Collocation Interference
- Frequency Assignment
- Coverage Comparison
- Traffic Capacity
- Coverage Optimiser
- Map Viewer
- Profile Viewer
- Propagation Models
- Geographical Databases
- Map Data Manager
- Point-to-Multipoint
- Interference
- Spectrum Viewer
- HF Planning
- Satellite Network Coordination
- Earth Station Coordination
- Spectrum Allocation Manager
- Broadcast
- Radar Coverage
- Radio Network
- Coordination Manager
- Calculators



MAKING RADIO VISIBLE, CONTROLLABLE AND VALUABLE

QUALITY OF SERVICE - 4G LTE Mobile Internet

Step 1: Assessment- Performance Audit

*Subscribers traffic
- drive test / users
behaviour*

*Theoretical
analysis of
network
performance*

Step 2 : E2E Troubleshooting

Recommendations
to improve
QoS/QoE

Configuration
Audit

Data Rate
Capacity and
Coverage

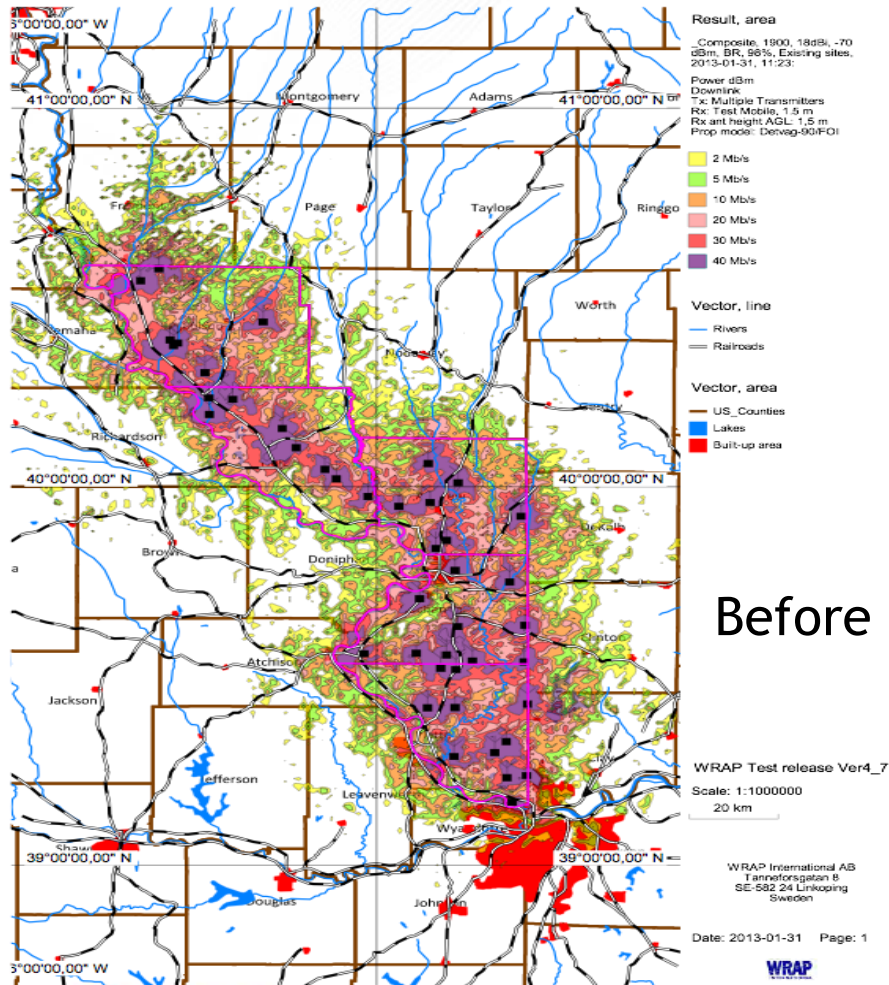
Step 3: Leader in LTE Mobile Broadband

Maintain QoS/QoE
leadership through
continuous
monitoring and
improvement of
QoS/QoE

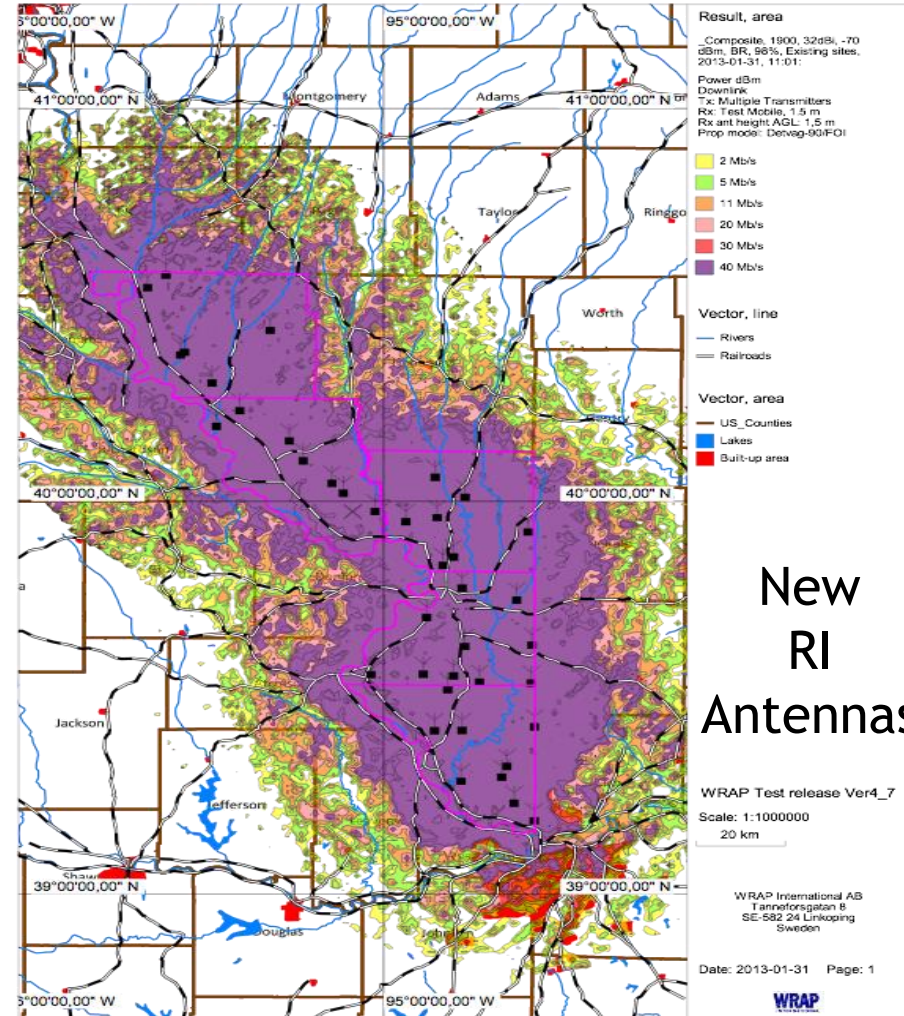


Mobile Broadband, LTE Before and After new antennas

Video-On-Demand indoor coverage 5 counties NW Kansas City Population 212 000
 Frequency band 1900 MHz; Bandwidth 10 MHz; 5 hrs VOD in busy hour



Before



New
 RI
 Antennas

WRAP International AB Business proposition

Thank you!

goran.olsson@wrap.se

www.wrap.se



MAKING RADIO VISIBLE, CONTROLLABLE AND VALUABLE

